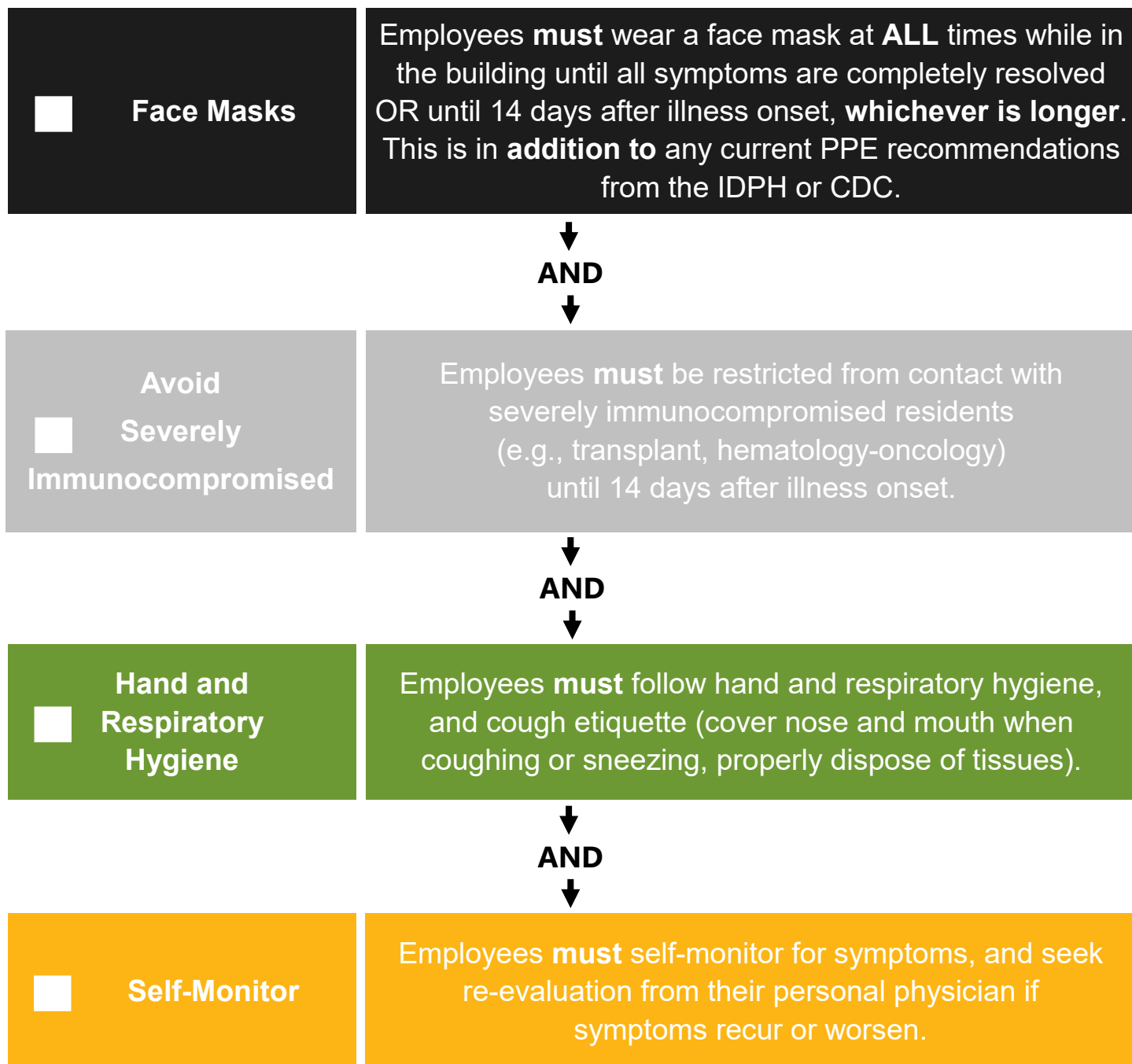


Return to Work Practices and Work Restrictions

This guide is to assist in determining best work practices for employees to follow when returning to work after they have been off work due to a confirmed positive or suspected case of COVID-19.

When returning to work:



Reference

Criteria for Return to Work for Healthcare Personnel with Confirmed or Suspected COVID-19 (Interim Guidance). (2020, March 16). Retrieved April 1, 2020, from <https://www.cdc.gov/coronavirus/2019-ncov/healthcare-facilities/hcp-return-work.html>